

Types of Cuts

Planing cut

V cuts

Beads

Peeling cut

Pommel cuts – notch, standard pommel, ogive pommel

Other uses

Burnishing

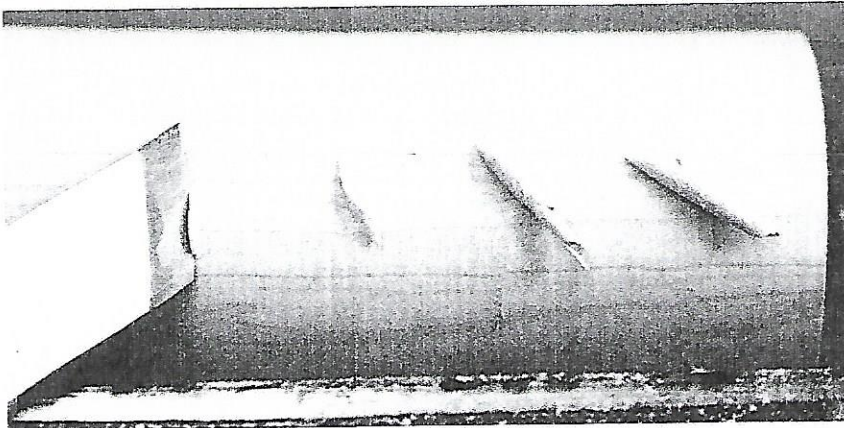
Negative Rake Scraper

Can opener

Discussion - How skews work

Where is the bevel?

How does it cut?



Each of these shavings was produced using the edge at a different angle. The near vertical edge (LEFT) merely pries fibers from the surface as it butts into end grain. As the edge is moved closer to 45°, the shaving becomes wider and thicker.

Why is it a 'double edged sword'?

Hint: Because you cut the wood with the top half (toe) of the blade or the bottom half (heel) of the blade but never the whole blade except when peeling or scraping. Cutting tolerances are tight with a small change resulting in a surprise catch.

Planing carrots

Beading rutabagas

Other Variations

Good Video: The Skew Chisel with Allen Batty